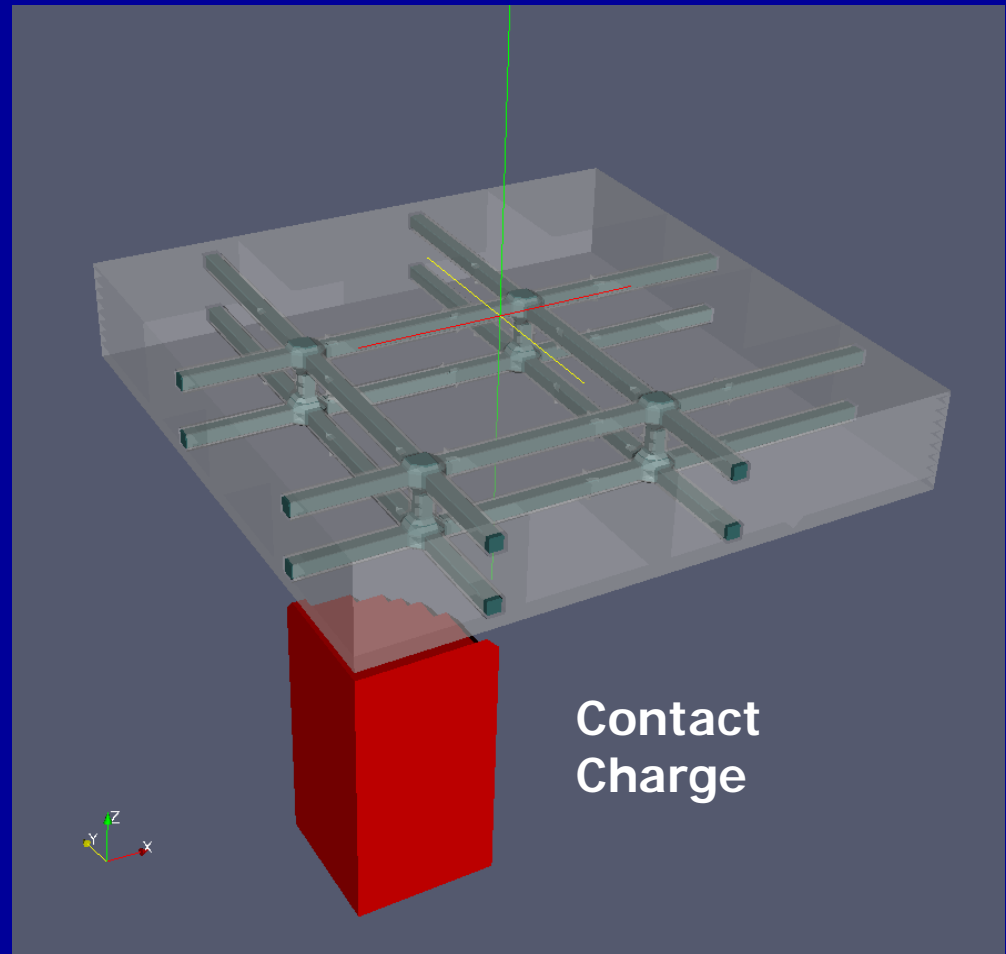


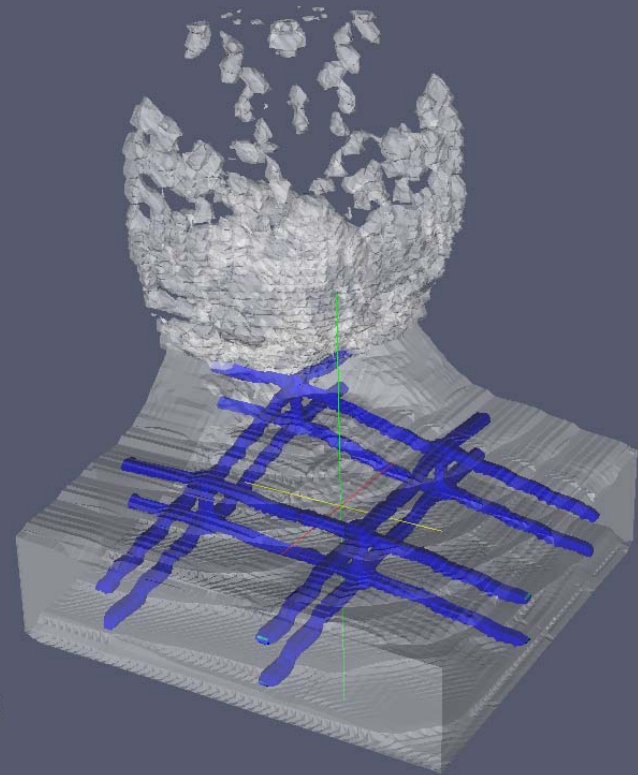
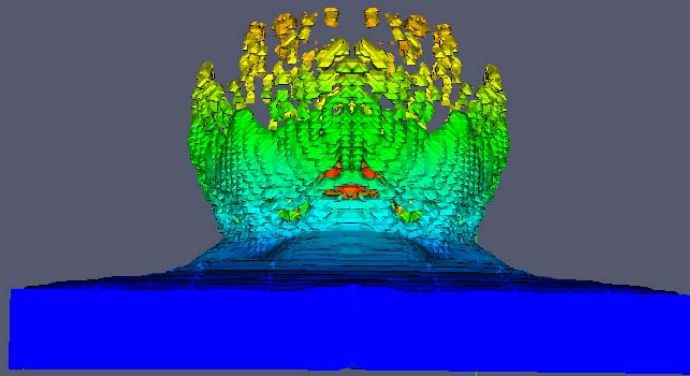
CartaBlanca Example: Contact Charge under a RC Slab

- Concrete: 100 cm square, 10 cm thick,
 - $f'_c=5,000$ psi
- #5 rebar @ 20 cm o.c., both ways, both faces
 - $f_y=60$ ksi
- Fixed edges
- Contact charge simulated by 1,000 atmosphere high pressure gas.



CartaBlanca Example: Contact Charge under a RC Slab

(Debris @ $T = 4$ msec)



$T = 4$ ms

CartaBlanca Example: Contact Charge under a RC Slab

(Pressure acting on Debris @ $T = 5$ msec)

CartaBlanca's multi-phase physics capabilities accounts for venting and situations where higher pressure on one side of a fragment will accelerate it

