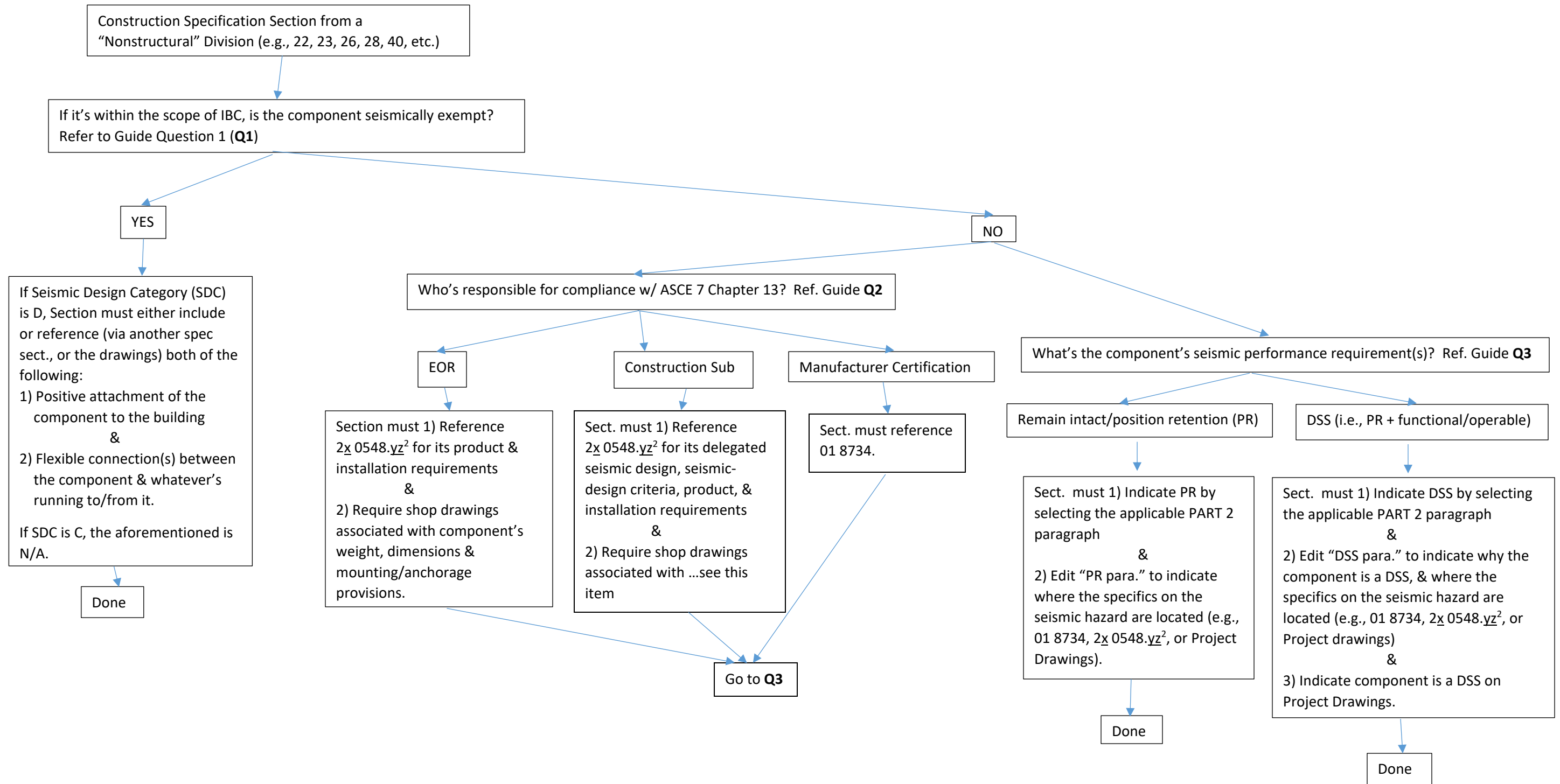


**Seismic Specification Editing Flowchart for LANL Nonstructural Components: A “Visual Summary” of the Seismic Specification Guides for Mechanical and Electrical Components<sup>1</sup>**



<sup>1</sup> Since this flowchart is just a “one-page snapshot” of the content of the Guides, it lacks quite a bit of important content included therein (e.g., the many criteria that must be met in order for a component to be seismically exempt, etc.).

<sup>2</sup> 22 0548.23 for “mechanical” and 26 0548.16 for “electrical” and fire alarm.