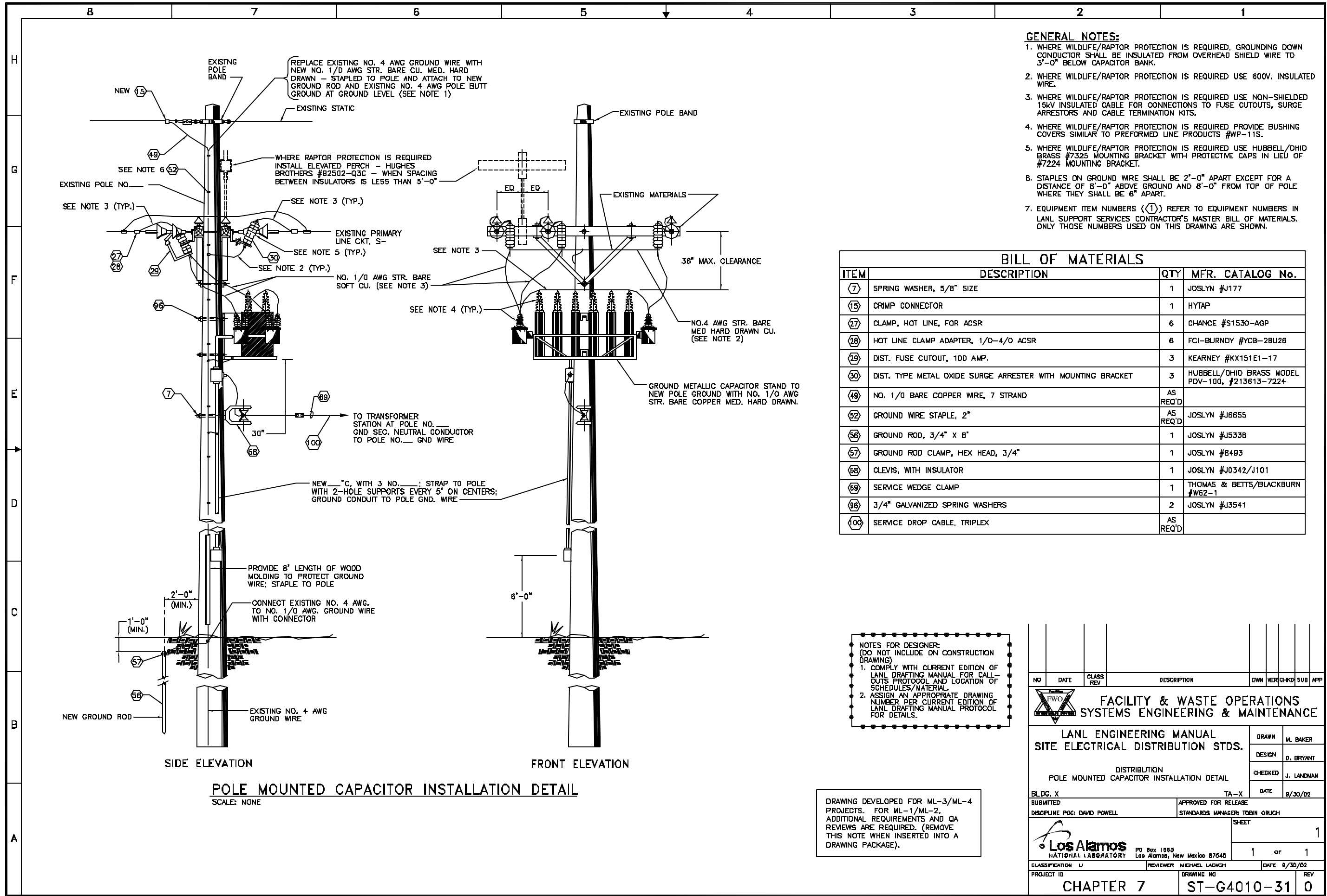


G:\LANL Engineering Standards\Eng. Manual [LEU]2 - Approved\ST-G4010-31E1.dwg, 11/19/02 14:25 05398B



- GENERAL NOTES:**
- WHERE WILDLIFE/RAPTOR PROTECTION IS REQUIRED, GROUNDING DOWN CONDUCTOR SHALL BE INSULATED FROM OVERHEAD SHIELD WIRE TO 3'-0" BELOW CAPACITOR BANK.
 - WHERE WILDLIFE/RAPTOR PROTECTION IS REQUIRED USE 600V, INSULATED WIRE.
 - WHERE WILDLIFE/RAPTOR PROTECTION IS REQUIRED USE NON-SHIELDED 15KV INSULATED CABLE FOR CONNECTIONS TO FUSE CUTOUTS, SURGE ARRESTORS AND CABLE TERMINATION KITS.
 - WHERE WILDLIFE/RAPTOR PROTECTION IS REQUIRED PROVIDE BUSHING COVERS SIMILAR TO PREFORMED LINE PRODUCTS #WP-11S.
 - WHERE WILDLIFE/RAPTOR PROTECTION IS REQUIRED USE HUBBELL/OHIO BRASS #7325 MOUNTING BRACKET WITH PROTECTIVE CAPS IN LIEU OF #7224 MOUNTING BRACKET.
 - STAPLES ON GROUND WIRE SHALL BE 2'-0" APART EXCEPT FOR A DISTANCE OF 8'-0" ABOVE GROUND AND 8'-0" FROM TOP OF POLE WHERE THEY SHALL BE 6" APART.
 - EQUIPMENT ITEM NUMBERS ((1)) REFER TO EQUIPMENT NUMBERS IN LANL SUPPORT SERVICES CONTRACTOR'S MASTER BILL OF MATERIALS. ONLY THOSE NUMBERS USED ON THIS DRAWING ARE SHOWN.

BILL OF MATERIALS

ITEM	DESCRIPTION	QTY	MFR. CATALOG No.
(7)	SPRING WASHER, 5/8" SIZE	1	JOSLYN #J177
(15)	CRIMP CONNECTOR	1	HYTAP
(27)	CLAMP, HOT LINE, FOR ACSR	6	CHANCE #S1530-AGP
(28)	HOT LINE CLAMP ADAPTER, 1/0-4/0 ACSR	6	FCI-BURNDY #YCB-28U28
(29)	DIST. FUSE CUTOUT, 100 AMP.	3	KEARNEY #KX151E1-17
(30)	DIST. TYPE METAL OXIDE SURGE ARRESTER WITH MOUNTING BRACKET	3	HUBBELL/OHIO BRASS MODEL PDV-100, #213613-7224
(49)	NO. 1/0 BARE COPPER WIRE, 7 STRAND	AS REQ'D	
(52)	GROUND WIRE STAPLE, 2"	AS REQ'D	JOSLYN #J6655
(56)	GROUND ROD, 3/4" X 8"	1	JOSLYN #J5338
(57)	GROUND ROD CLAMP, HEX HEAD, 3/4"	1	JOSLYN #B493
(68)	CLEVIS, WITH INSULATOR	1	JOSLYN #J0342/J101
(69)	SERVICE WEDGE CLAMP	1	THOMAS & BETTS/BLACKBURN #W62-1
(98)	3/4" GALVANIZED SPRING WASHERS	2	JOSLYN #J3541
(100)	SERVICE DROP CABLE, TRIPLEX	AS REQ'D	

NOTES FOR DESIGNER:
(DO NOT INCLUDE ON CONSTRUCTION DRAWING)

- COMPLY WITH CURRENT EDITION OF LANL DRAFTING MANUAL FOR CALL-OUTS PROTOCOL AND LOCATION OF SCHEDULES/MATERIAL.
- ASSIGN AN APPROPRIATE DRAWING NUMBER PER CURRENT EDITION OF LANL DRAFTING MANUAL PROTOCOL FOR DETAILS.

DRAWING DEVELOPED FOR ML-3/ML-4 PROJECTS. FOR ML-1/ML-2, ADDITIONAL REQUIREMENTS AND QA REVIEWS ARE REQUIRED. (REMOVE THIS NOTE WHEN INSERTED INTO A DRAWING PACKAGE).

NO	DATE	CLASS	REV	DESCRIPTION	OWN	VER	CHKD	SUB	APP	
FACILITY & WASTE OPERATIONS SYSTEMS ENGINEERING & MAINTENANCE										
LANL ENGINEERING MANUAL SITE ELECTRICAL DISTRIBUTION STDS.					DRAWN	M. BAKER				
DISTRIBUTION POLE MOUNTED CAPACITOR INSTALLATION DETAIL					DESIGN	D. BRYANT				
BLDG. X					CHECKED	J. LANDMAN				
SUBMITTED					DATE	9/30/02				
DISCIPLINE POCI DAVID POWELL					APPROVED FOR RELEASE	STANDARDS MANAGER TOBIN GRUCH				
SHEET					1					
					PO Box 1663	Los Alamos, New Mexico 87545				
CLASSIFICATION	U	REVIEWER	MICHAEL LADACH		DATE	9/30/02				
PROJECT ID	DRAWING NO		CHAPTER 7		ST-G4010-31	REV 0				