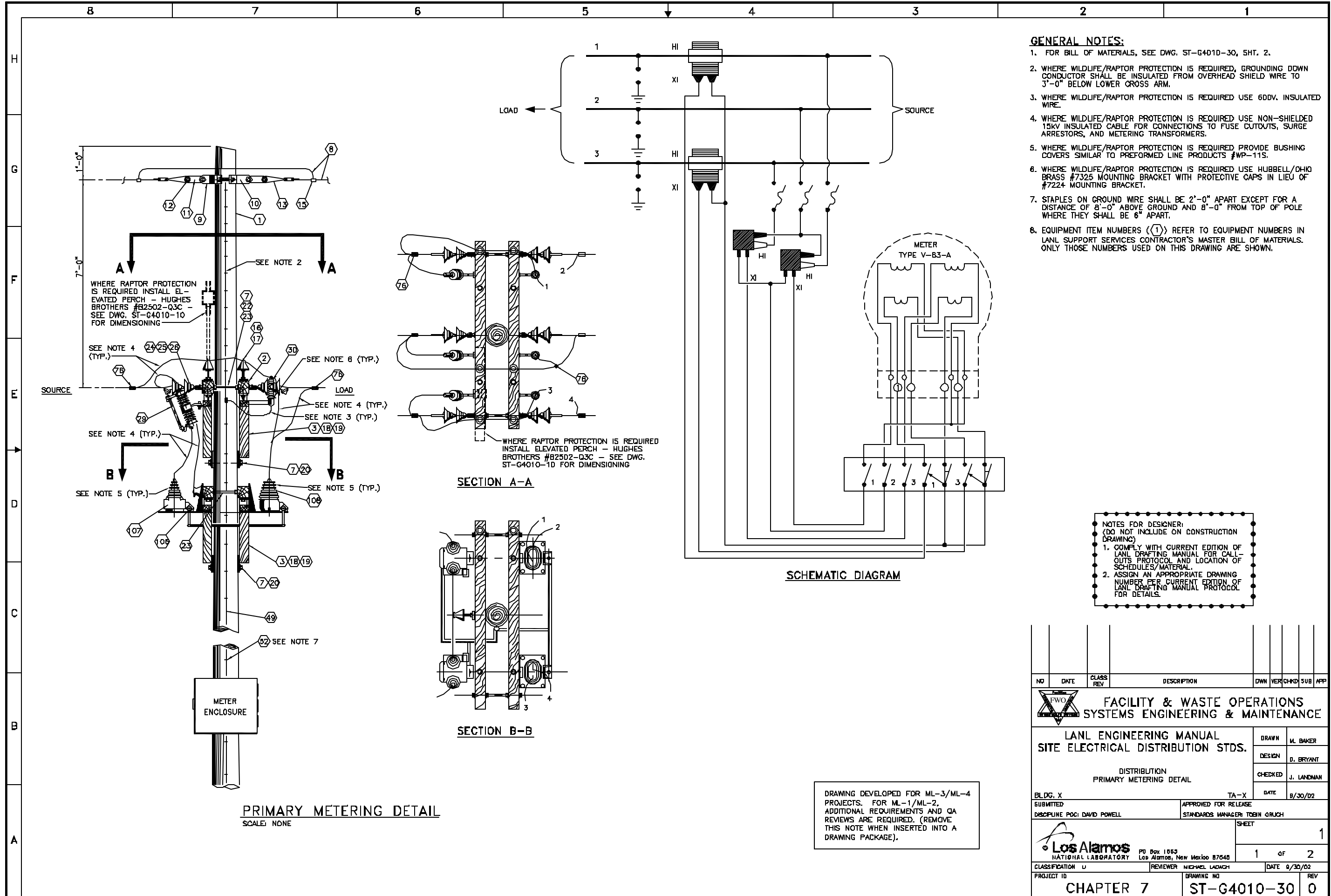


G:\LANL Engineering Standards\Eng. Manual [LEU]2 - Approved\ST-G4010-30E1.dwg, 11/04/02 15:49 053068





- GENERAL NOTES:**
1. FOR BILL OF MATERIALS, SEE DWG. ST-G4010-30, SHT. 2.
  2. WHERE WILDLIFE/RAPTOR PROTECTION IS REQUIRED, GROUNDING CONDUCTOR SHALL BE INSULATED FROM OVERHEAD SHIELD WIRE TO 3'-0" BELOW LOWER CROSS ARM.
  3. WHERE WILDLIFE/RAPTOR PROTECTION IS REQUIRED USE 6DDV. INSULATED WIRE.
  4. WHERE WILDLIFE/RAPTOR PROTECTION IS REQUIRED USE NON-SHIELDED 15KV INSULATED CABLE FOR CONNECTIONS TO FUSE CUTOUPS, SURGE ARRESTORS, AND METERING TRANSFORMERS.
  5. WHERE WILDLIFE/RAPTOR PROTECTION IS REQUIRED PROVIDE BUSHING COVERS SIMILAR TO PREFORMED LINE PRODUCTS #WP-115.
  6. WHERE WILDLIFE/RAPTOR PROTECTION IS REQUIRED USE HUBBELL/OHIO BRASS #7325 MOUNTING BRACKET WITH PROTECTIVE CAPS IN LIEU OF #7224 MOUNTING BRACKET.
  7. STAPLES ON GROUND WIRE SHALL BE 2'-0" APART EXCEPT FOR A DISTANCE OF 8'-0" ABOVE GROUND AND 8'-0" FROM TOP OF POLE WHERE THEY SHALL BE 6" APART.
  8. EQUIPMENT ITEM NUMBERS (1) REFER TO EQUIPMENT NUMBERS IN LANL SUPPORT SERVICES CONTRACTOR'S MASTER BILL OF MATERIALS. ONLY THOSE NUMBERS USED ON THIS DRAWING ARE SHOWN.

**NOTES FOR DESIGNER:**  
(DO NOT INCLUDE ON CONSTRUCTION DRAWING)

1. COMPLY WITH CURRENT EDITION OF LANL DRAFTING MANUAL FOR CALL-OUTS PROTOCOL AND LOCATION OF SCHEDULES/MATERIAL.
2. ASSIGN AN APPROPRIATE DRAWING NUMBER PER CURRENT EDITION OF LANL DRAFTING MANUAL PROTOCOL FOR DETAILS.

DRAWING DEVELOPED FOR ML-3/ML-4 PROJECTS. FOR ML-1/ML-2, ADDITIONAL REQUIREMENTS AND QA REVIEWS ARE REQUIRED. (REMOVE THIS NOTE WHEN INSERTED INTO A DRAWING PACKAGE).

NO	DATE	CLASS	DESCRIPTION	OWN	VER	CHKD	SUB	APP	
 <b>FACILITY &amp; WASTE OPERATIONS SYSTEMS ENGINEERING &amp; MAINTENANCE</b>									
<b>LANL ENGINEERING MANUAL SITE ELECTRICAL DISTRIBUTION STDS.</b>							DRAWN M. BAKER		
DISTRIBUTION PRIMARY METERING DETAIL							DESIGN D. BRYANT		
BLDG. X TA-X							CHECKED J. LANDMAN	DATE 9/30/02	
SUBMITTED DISCIPLINE POCI DAVID POWELL			APPROVED FOR RELEASE STANDARDS MANAGER TOBIN GRUCH						
 <b>Los Alamos</b> NATIONAL LABORATORY							PO Box 1663 Los Alamos, New Mexico 87545	1 of 2	
CLASSIFICATION U		REVIEWER MICHAEL LADWCH		DATE 9/30/02		SHEET 1			
PROJECT ID <b>CHAPTER 7</b>			DRAWING NO <b>ST-G4010-30</b>			REV <b>0</b>			

**PRIMARY METERING DETAIL**  
SCALE: NONE

**SECTION A-A**

**SECTION B-B**

**SCHEMATIC DIAGRAM**